



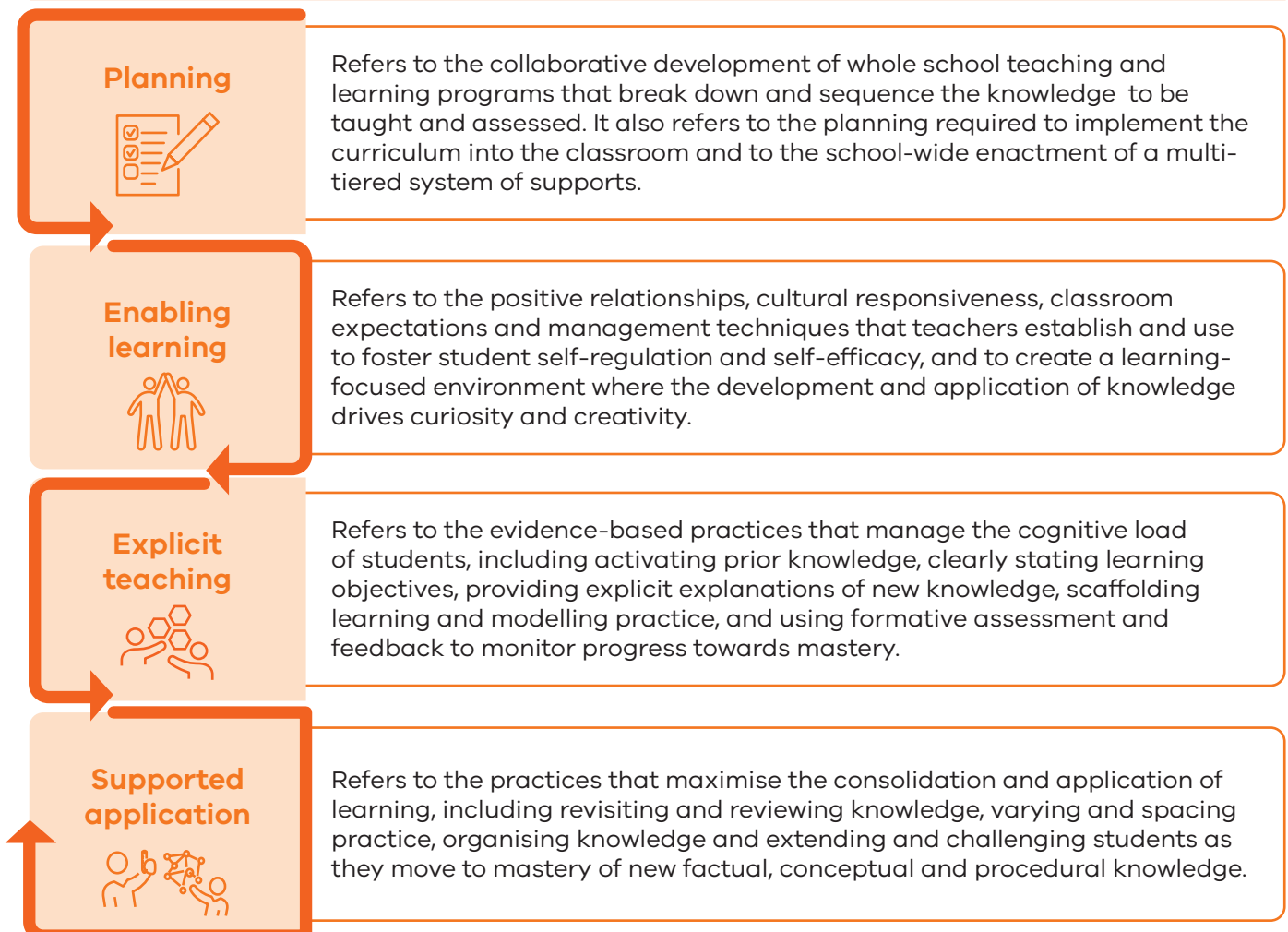


# Victorian Teaching and Learning Model 2.0

## Elements of learning

 <b>Attention, focus and regulation</b>	 <b>Knowledge and memory</b>	 <b>Retention and recall</b>	 <b>Mastery and application</b>
<p>Refers to learning requiring students' attention and involving active engagement in a supportive and responsive learning-focused environment.</p>	<p>Refers to students processing new information in their working memory, where they connect it with existing knowledge in long-term memory, building mental models that integrate and organise knowledge.</p>	<p>Refers to working memory being able to hold a small amount of information at once (cognitive load). If overloaded, new knowledge won't be effectively stored in long-term memory.</p>	<p>Refers to consistent practice and retrieval, allowing students to develop and demonstrate mastery by retaining knowledge and understanding how to apply it effectively.</p>

## Elements of teaching



\* Knowledge includes factual, conceptual and procedural knowledge. See AERO (2023), <https://www.edresearch.edu.au/resources/how-students-learn-best>, p.5